

WISH LIST 2023 (NPO 165-422)

Thank you for considering donating to Heartlands
 Please bear in mind that we can issue you with a S18A certificate which means that the **full value of your donation is 100% tax deductible.**

Contact: Nikki Bower – 021-852 3527 | nikki@heartlandsbaby.org

About Heartlands:

Heartlands Baby Sanctuary, based in Somerset West, at The Interchange, is a short-term residential safe care facility for 25 children at any given time. We provide individual specialised care and support to children in desperate need of care and protection from birth to 6 years. Children are placed with a valid court order from the Children’s Court. These are children who have been abandoned, abused, neglected, orphaned, who are disabled and or are sick. In the past 7 years, we have cared for over 320 children.

After the Children’s Court proceedings are finalised, they are either reunited with their parents or family members, placed in foster care, transferred to other long-term facilities, or adopted. We strive to develop the family bond by either visiting or being accommodated in the mother’s room. We educate them on how to nurture and safely care for their children, once reunited back at home. Heartlands Baby Sanctuary is a registered Child and Youth Care Centre and Community Mental Health Facility.

What it takes for Heartlands to Care for a Child



CHILD CARE CENTRE - Child Care Centre (Health, Psychosocial, Stimulation)

- Infacare # 1 and #2
- Tissues
- Wet wipes
- Diapers – Huggies and Cuddlers – prem- #4
- Infacare 1 and Infacare 2, Nido 1+ (1.8kg)
- Nido 1 + (1.8kg)
- SMA Pro 2-6 months (200ml milk)
- Brown teats and 250ml bottles
- Eucerin aquaphor ointment
- Rehydrate – Orange
- Sudocreme, Bepanten, Sensoderm, Zinc & Castor ointment
- Toothpaste – kiddies, and soft toothbrushes
- Toilet paper
- Black bags
- Omo Auto washing powder
- Non-perishable food – pasta, rice, tins – bully beef, mixed veg, beans, tuna, jam, peanut butter, pilchards, peas
- Cheese curls, lollipops, fizzers and marshmallows for birthdays
- Juice - fruit punch, litchi, apple, grape etc, Rooibos tea & sugar, jelly and custard powder
- Tomato paste, Beef stock and Bisto, Cooking oil, vinegar, tomato sauce, mayonnaise, chutney, salt, Marie biscuits / Tennis biscuits
- Shelving for maintenance room
- Disinfectant

SEEDS OF HOPE GARDEN (our 4th sustainability project)

- Sign boards to mark planting dates and name of plants
- 60m Chicken mesh 600mm x 50mm hole size, 100cm height
- Pointed shovels
- 10 laying hens
- 25kg of mixed fowl food per month - Adopt a Duck – help keep the pesticides at bay whilst giving our ducks that super-nutrition that they need to provide us with fresh organic duck eggs daily

LARGER ITEMS

- 5 x new laptops
- A revamp / makeover of our Child Care Kitchen
- New tiled flooring for the Sanctuary
- Branded gazebo and 3 x 3m and 4 x branded double sided flags – 4m high

COFFEE SHOP

- Industrial deep fryer

FINANCIAL ASSISTANCE (100% TAX-DEDUCTIBLE)

- **Adopt a Cot** – R7 000pm shortfall pm x 25 cots (any contribution will go a long way)
- **Adopt a Tree** (please specify if your donation is for a tree (Adopt a Tree) which gets named after you or if you would like to make an overall donation towards the garden, in which case please use SOH as reference - **Contributions will go towards orchard maintenance & nutrition.**
- **Adopt a Duck** – R150pm will contribute towards orchard maintenance, natural pesticides & nutrition.

All donations are **100%**
tax-deductible
given our **S18A** status



ADOPT A COT

Item	CHILD 6mths-6y	BABY 0-6mths
Monthly medication and drugs	1000	1000
Medical and specialist treatment	500	500
Nutritious meals	900	450
Disposable nappies	1200	1800
Milk Formulas		850
Clothing	700	300
Toiletries (shampoo, soap, toothpaste etc.)	700	700
General (Disinfectant, gloves, washing powder) Social Worker, Child and Youth Care Workers & Medical Staff (Health Care Manager, Staff Nurse and 4 CYCW per shift day/ per night) Supporting Staff (Facility Manager, Cook, Cleaner, Gardener Stimulation equipment (puzzles, books, building blocks, etc.)	6800	6800
	1700	1700
	600	300

TOTAL COST PER CHILD PER MONTH	14900	15200
less Dept. Of Social Development contribution (23%)	4050	4050
less Heartlands Sustainability project contribution (20%)	3850	3850
Total contribution	7900	7900
SHORTFALL PER MONTH	7000	7300

**Adopt
a
Cot**

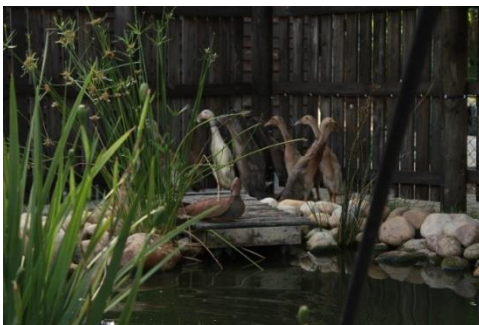
Please consider donating on a monthly debit order R150 or more, or as a once-off donation, towards our annual shortfall of over

R2.4m

NPO: 165 422

Banking Details

HEARTLANDS BABY SANCTUARY
NEDBANK – BUSINESS ACCOUNT
ACCOUNT # - 123 609 6762



Snap here to pay



Banking Details

HEARTLANDS BABY SANCTUARY
NEDBANK – BUSINESS ACCOUNT
ACCOUNT # - 123 609 6762